

Alimak Hek in the Construction



field

Alimak Hek mast climbing equipment is used on the world's tallest buildings, longest bridges and largest hydro-electric power generation facilities.

Our construction hoists deliver fast, reliable transport of material and people across the construction spectrum – new buildings, renovations, chimneys, towers and bridges.

Replacing conventional scaffolding, our mast climbing work platform solutions generate the desired results in terms of money, scheduling and sequencing of construction activities. Thanks to our solutions, our construction customers can work at the required height with all the materials needed for a full days work at the touch of a button.



Reference Examples



Taipei 101, Taipei, Taiwan

The world's highest building, the 508 m Taipei Financial Centre in Taiwan, used six twin cage Scando hoists of different models. The three high-speed twins had top landing heights of 285–399 m.



Residential development, Istanbul, Turkey

Thirteen Alimak hoists were used on a large-scale residential development in Istanbul, Turkey, for lifting men and materials to all levels of the 13 tower blocks on the project.



Bridge Repair, Niagara Falls, USA

The Rainbow Bridge at the Niagara Falls on the Canadian – US border recently underwent rigorous inspection, repair and painting with the help of an Alimak construction hoist.



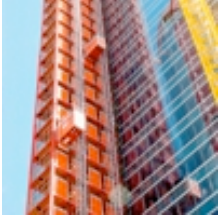
Turning Torso, Malmö, Sweden

When one of Europe's largest residential towers, the 190 m high Turning Torso, advanced above its 15th-story in Malmö, Sweden, the contractor changed the configuration of its dual Alimak construction hoists to high speed – the first in Sweden – to keep up with the pace of construction.



Lift Installation, London, UK

Hek EasyLifter eases elevator installation in one of Europe's tallest residential buildings.



Torre Caja Madrid, Cristal, & Espacio, Madrid, Spain

Madrid's skyline is being changed dramatically with the help of some of the tallest Alimak construction hoists ever used in Europe.



Studentskrapan, Stockholm, Sweden

A new Alimak construction hoist is proving its worth in the restoration of a 27-story Stockholm office block that is being turned into ultra-modern student apartments.



High Rise Construction, Hong Kong, PRC

Alimak construction hoists speed construction on record-breaking Hong Kong tower.



Sapphire Tower, Istanbul, Turkey

The fast, efficient, and compact vertical transportation system from Alimak Hek is used to move people and materials between floors of Turkey's tallest building, the Sapphire Tower in Istanbul.



Ocean Heights 1, Dubai Marina, Dubai, UAE

The ultra-fast, 100 m/min, Alimak Scando 650 FC-S is used for the construction of Ocean Heights 1 in Dubai.



Mashattan Residential Project, Istanbul, Turkey

The 140 m high Mashattan residential project features 10 Alimak passenger/material hoists, the most Alimak construction hoists ever used on a single project in Istanbul.



Petronas Towers, Kuala Lumpur, Malaysia

The 452 m high Petronas Twin Towers in Kuala Lumpur, Malaysia used four high-speed Alimak Scando Super 32/40C, lifting height 308 m.



Two International Finance Centre (2 IFC), Hong Kong, China

Hong Kong's tallest tower, the 88-storey 2 IFC had the region's highest Alimak hoists operating throughout construction, travelling to a final mast height of 353 m at the 85 th storey.



Tuntex & Chien Tai Tower (T&C Tower), Kaohsiung, Taiwan

Six Alimak Scando Super 28/45C were used when building the 348 m high T&C Tower in Kaohsiung, Taiwan, an office and hotel building of 83 floors.



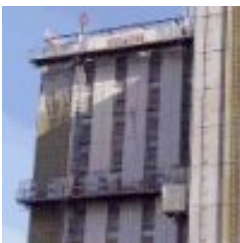
Central Plaza, Hong Kong, China

Two units Scando Super twin 20/37C were used during construction in 1978 of the high-rise building Central Plaza.



Enercon, the North Sea Coast, Germany

To reach the height of 90 m with pre-manufactured concrete parts, two mast climbing work platforms (MSHF) were used per windmill.



Hilton Hotel, Copenhagen, Denmark

During the construction of the Hilton Hotel in Copenhagen near the airport, Hek mast climbing work platforms were used, mostly working as a two mast version with two decks on the same mast!



Venetian Hotel, Las Vegas, USA

During construction of The Venetian Hotel - the world's largest hotel, Hek mast climbing work platforms were used by the themed environmental contractor to install lightweight metal studding and EIFS to the 122 m high (400 feet) replica of the famous Venetian Campanile Tower.



INHolland University of Applied Sciences, Rotterdam, The Netherlands

The INHolland University of Applied Sciences in Rotterdam has expanded with three new buildings. Alimak Hek was asked to supply the mast climbing work platforms for the façade cladding of the building



New Golden Tulip Hotel, Diegem, Belgium

This business hotel is located next the motorway and close to the international airport at Zaventem. A well insulated building is extremely important for the comfort of guests. Two mast climbing work platforms, HEK MCM, were used to install the curtain walls and glazing of the entire complex.
