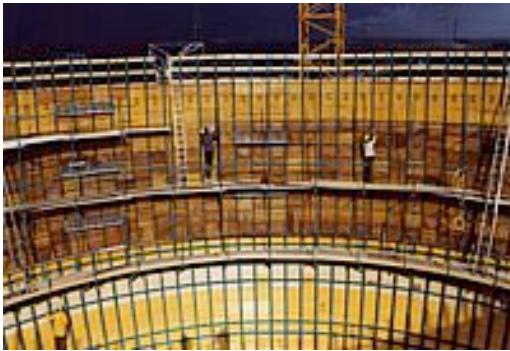


## RSB Schalungstechnik

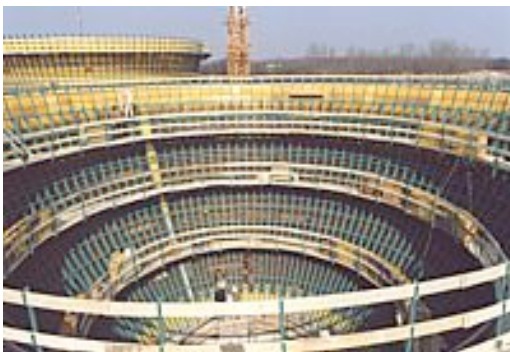
Egg-shaped digesters



1. Exterior formwork for construction sequence 3 is installed in elements and connected



2. Interior formwork for construction sequence 3 is placed, working platform and safety scaffolding installed



3. Exterior formwork is placed up to the equator (phase 4), RSB scaffolding for reinforcement work



4. Continuous ring-shaped concrete work, optimum compacting, maximum concrete drop 50 cm



**5.** Formwork placed for construction phases 3 and 4, working platform and safety scaffolding assembled



**6.** Interior formwork for construction phase 5 is placed, RSB scaffolding for installation of reinforcement, prestressing, and built-in parts assembled



**7.** Concrete poured for construction phase 5, interior formwork for phases 6 and 7 placed, assembly of RSB reinforcement scaffolding



**8.** Complete interior view of the self-supporting formwork above the equator with rotating ladder



- 9.**  
Adjustable ladder for dismantling the interior scaffolding at the equator



- 10.**  
Full view of the completed digester with stressing recesses