



Egg-shaped digester formwork by RSB



RSB FORMWORK TECHNOLOGY

Make the comparison

Constant competition means constant comparison. Price to price, service to service, feature to feature: our customers know that RSB outshines the competition where performance and service count.

That can be expressed by the bottom line or by the feeling of confidence provided by working with a competent, dedicated partner.



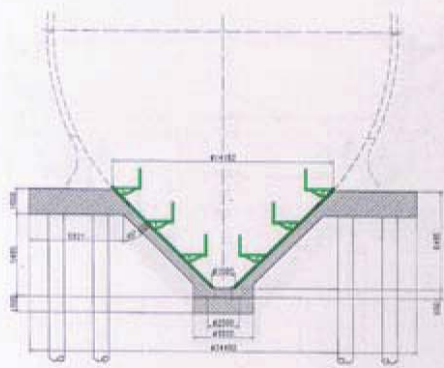
How RSB compares

Specializes exclusively in circular formwork

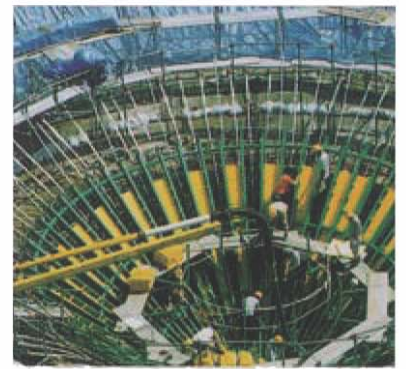
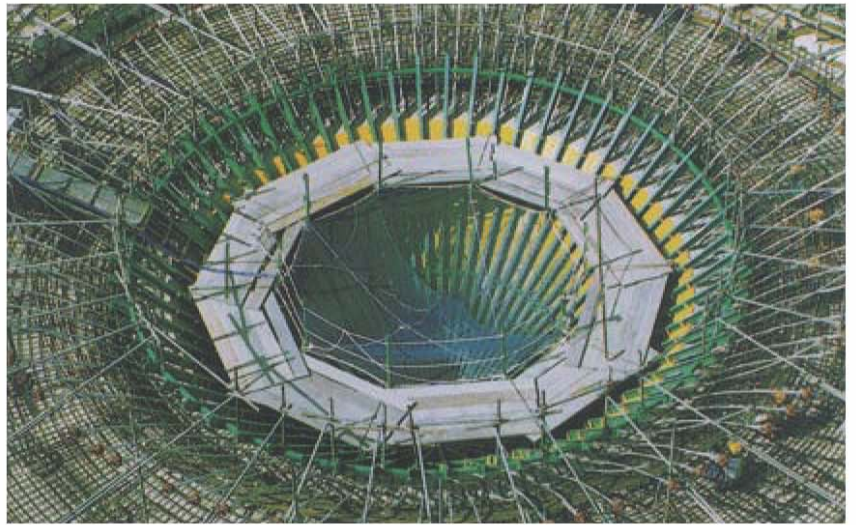
- Proven on-site performance guaranteed through RSB formwork systems
- More than 15 years' experience in building sewage treatment plants
- RSB total solutions for every formwork application
- RSB project managers are experienced, dedicated advisors
- Prefabricated system components reduce assembly times
- On-site formwork supervisors ensure smooth progress
- Every RSB formwork system includes safe, solid working platforms
- Complete planning, engineering and fabrication
- RSB systems complement each other



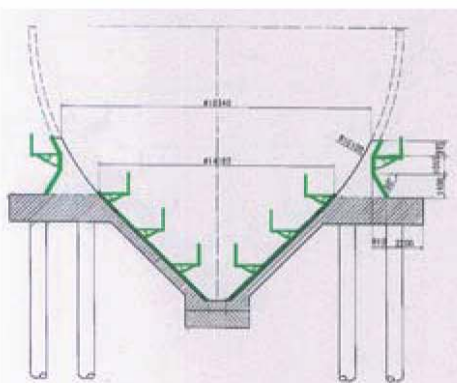
Construction sequence # 1



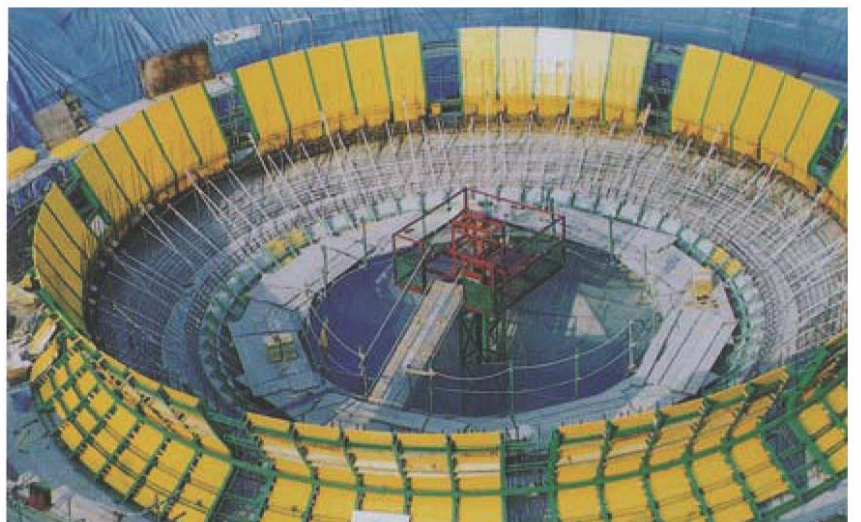
Building the funnel



Installation of the prefabricated form boards prior to concrete pour



Exterior formwork of transition piece

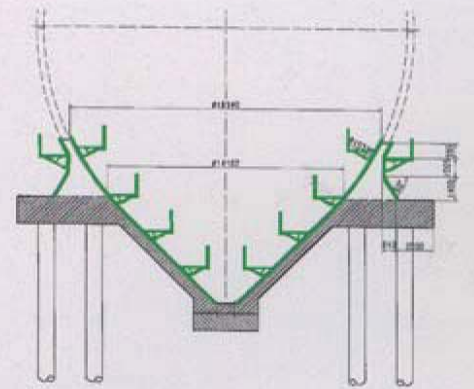




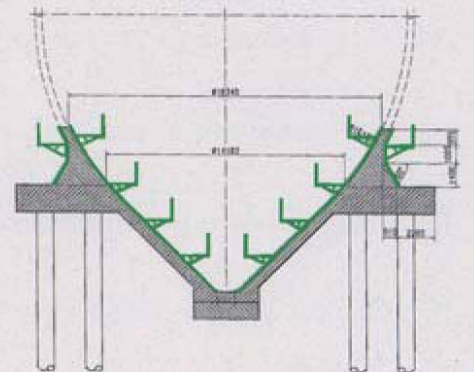
Assembled formwork segment



Construction sequence # 2

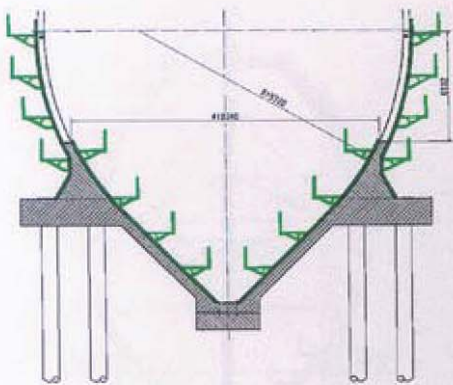


Interior formwork of transition piece

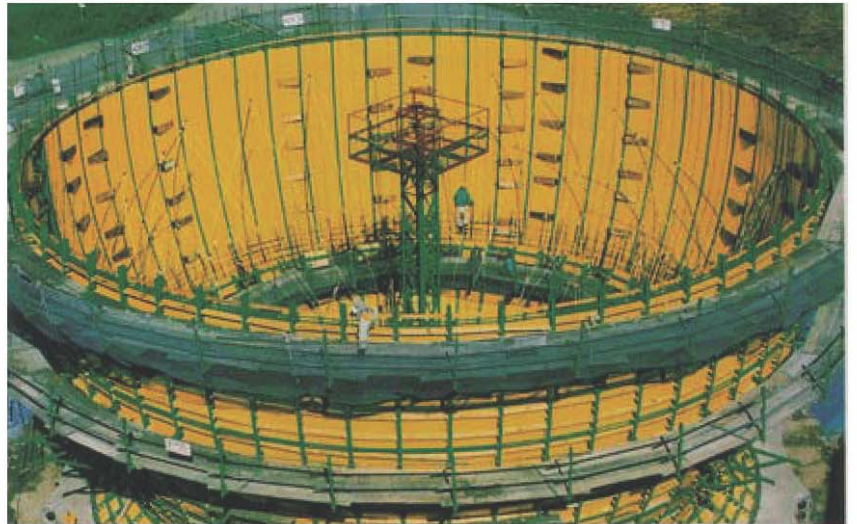


Concrete pouring

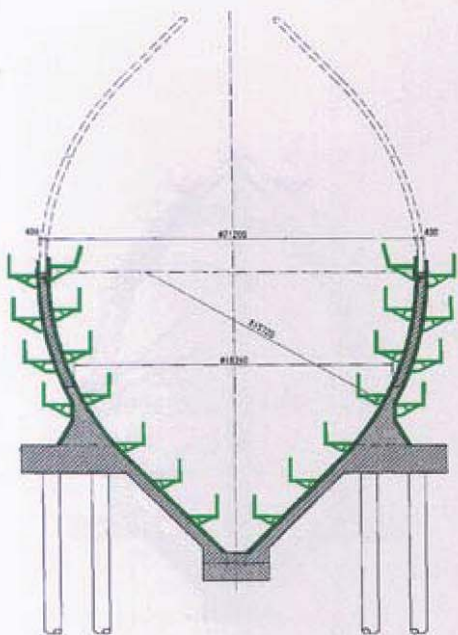
Construction sequence # 3



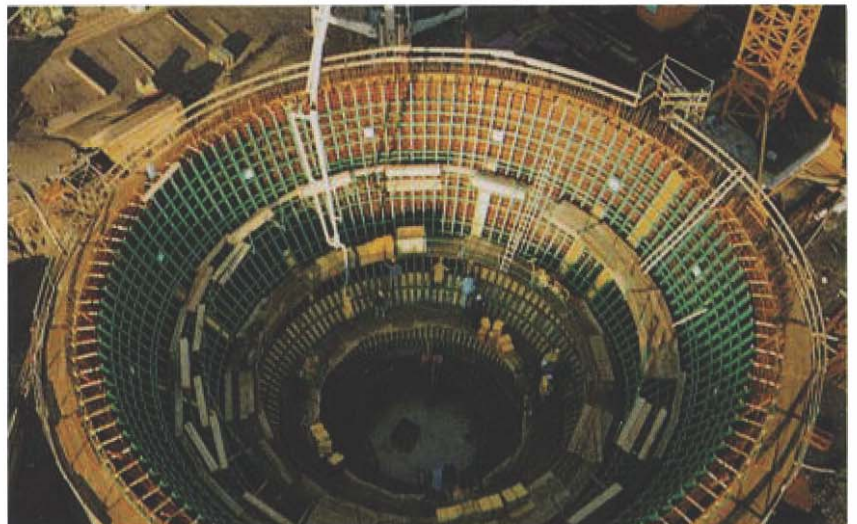
Exterior formwork up to equator



Placing assembled formwork segments

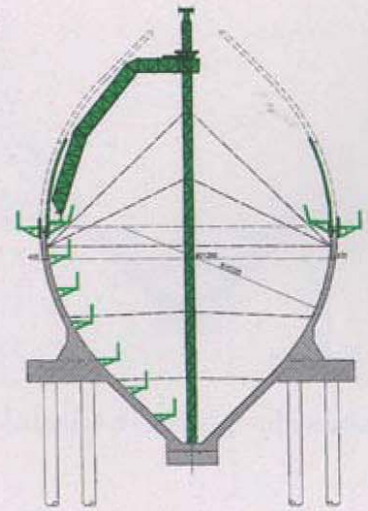


Interior formwork and concrete poured up to equator

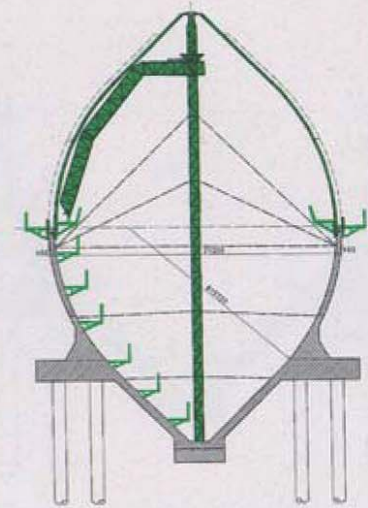




Construction sequence # 4

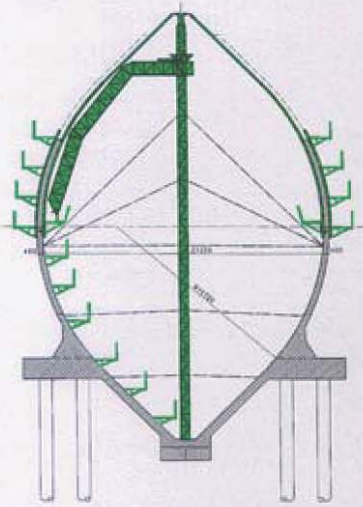


Interior formwork, first section above equator

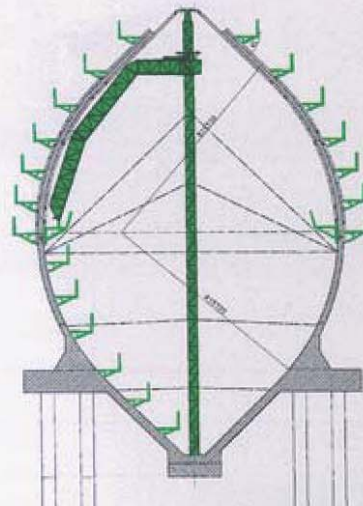


Interior formwork, completed to the top

Construction sequence # 5



First section above equator, completed



Second section above equator, concrete poured to the top



**All over the map.
RSB egg-shaped digesters throughout the world.**



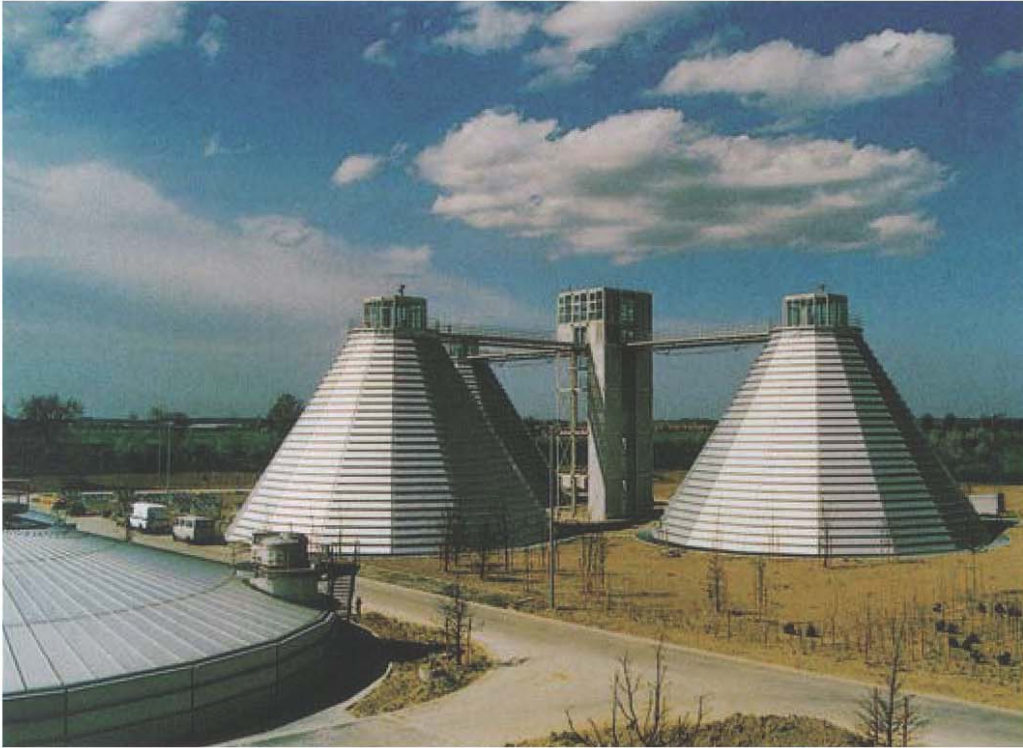
Bottrop, Germany.
Four egg-shaped digesters 15,000 m³ each.

**All over the map.
RSB egg-shaped digesters throughout the world.**



Bottrop, Germany.
Four egg-shaped digesters 15,000 m³ each.

Munich II, Germany. Three egg-shaped digesters 12,500 m³ each.



Krefeld, Germany. Three egg-shaped digesters 9,000 m³ each.



Lippstadt, Germany. Two egg-shaped digesters 3,500 m³ each.

Baltimore, Maryland, USA. Two egg-shaped digesters 11,350 m³ each.



Kaufbeuren, Germany. Two egg-shaped digesters 2,100 m³ each.



Bottrop, Germany. Four egg-shaped digesters 15,000 m³ each.



RSB FORMWORK TECHNOLOGY

RSB Schalungstechnik GmbH & Co KG
Schilfweg 1 • A-6972 Fussach/Austria
T +43-5578-7960-0
F +43-5578-7960-400
info@rsb.info • www.rsb.info